



RADIUS
STUDENTS

EXPLORING
SALVATION

TABLE OF CONTENTS

| | |
|---------------------------------------|----|
| Welcome & Overview | 1 |
| The Very Beginning | 3 |
| How You Got Here | 4 |
| Your Problem | 5 |
| Sin Leads to Separation | 6 |
| How Does Sin Impact Me? | 7 |
| 2 Types of Death | 8 |
| It's Not Enough | 9 |
| God's Solution | 10 |
| Your Response | 11 |
| God Speaks To You | 12 |
| Your Next Steps | 13 |
| Now What? & Recap | 15 |

WELCOME

MESSAGE

We are so glad you are exploring faith. By that I mean, you are asking questions and being open-minded regarding God, the Bible and other spiritual things. At RADIUS Students, we always say, *"you don't have to believe in order to belong."* We mean that. You don't have to believe the same things that we believe about God and the Bible in order to be part of what is going on in our ministry. We believe that if God is real (and we are confident that He is), then He will reveal Himself to you - if you are open to Him. If God is not real, then there is nothing we can do to get you to believe in Him. By going through this booklet, you are showing that you are at least open to the idea that God is real and wants to reveal Himself to you.

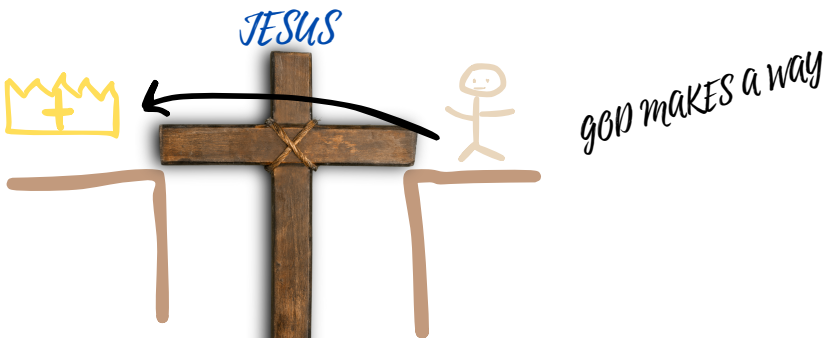
As you go through the following pages, what you'll see is the very foundation of what we believe about God and His plan for you. We call this "the Gospel" - or the good news of God. These pages contain good news for people who are open to God. As you explore, ask questions and remain open as to what God might be communicating to you. We're cheering for you all along the way.



Brent Squires

Students Pastor
RADIUS Church

OVERVIEW



THE VERY BEGINNING

In the beginning God created the heavens and the earth.

Genesis 1:1 (NIV)



CREATION

DAY 1 - HEAVENS & EARTH

DAY 2 - SKY & ATMOSPHERE

DAY 3 - LAND & SEA

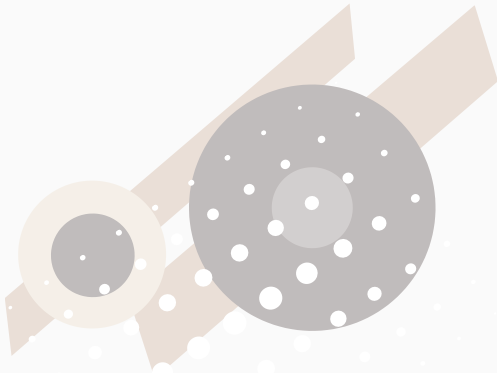
DAY 4 - SUN, MOON, & STARS

DAY 5 - SEA CREATURES & BIRDS

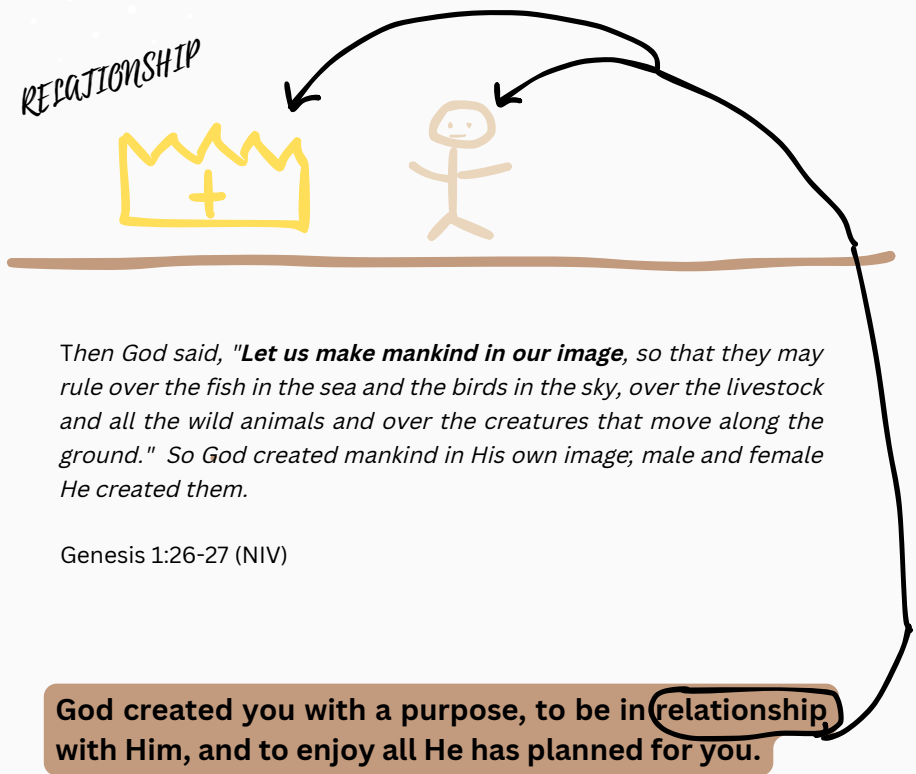
DAY 6 - LAND CREATURES & HUMANS

DAY 7 - GOD RESTED





HOW YOU GOT HERE



Then God said, "**Let us make mankind in our image**, so that they may rule over the fish in the sea and the birds in the sky, over the livestock and all the wild animals and over the creatures that move along the ground." So God created mankind in His own image; male and female He created them.

Genesis 1:26-27 (NIV)

God created you with a purpose, to be in relationship, with Him, and to enjoy all He has planned for you.

YOUR PROBLEM

PRIDE



Pride makes us want things our way, not God's way. Pride always leads to sin.

THE FALL



*And the Lord God commanded the man, "You are free to eat from any tree in the garden; but you must not eat from the tree of knowledge of good and evil, for when you eat from it **you will certainly die.**"*

Genesis 2;16-17 (NIV)

When the woman saw that the tree was good for food, and that it was a delight to the eyes, and that the tree was desirable to make one wise, she took some of its fruit and ate; and she also gave some to her husband with her and he ate.

Genesis 3:6 (NASB)

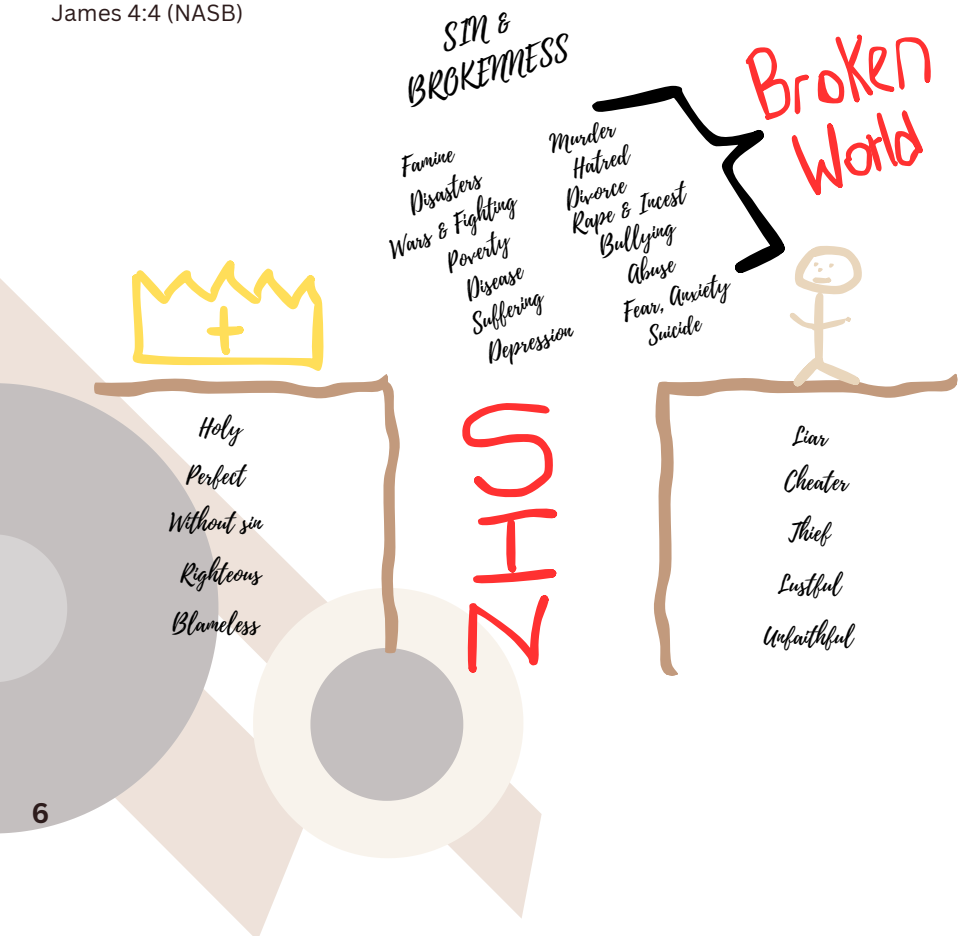
SIN LEADS TO SEPARATION

WHAT IS SIN?

Sin is anything outside of God's will. And sin always creates separation from God.

.....do you not know that friendship with the world is hostility toward God? Therefore whoever wants to be friends of the world makes himself an enemy of God.

James 4:4 (NASB)



HOW DOES SIN IMPACT ME?

*For the wages of sin is death,
but the gift of God is eternal life
in Christ Jesus our Lord.*

Romans 6:23 (NIV)



Wages are what you're paid for what you've earned. Your sin has earned you separation from God, and death in this life and in eternity.

Your sin separates you from God for all eternity unless somehow you are reconnected to Him and brought back to life.

There are many ways people attempt to reconnect to God - but no one can reconnect with God on their own.

2 TYPES OF DEATH

*The Lord God took the man and put him in the Garden of Eden to work it and take care of it. And the Lord God commanded the man, "You are free to eat from any tree in the garden; but you must not eat from the tree of the knowledge of good and evil, for when you eat from it **you will certainly die.**"*

Genesis 2:15-17 (NIV)

1

PHYSICAL

Physical death is when the physical body dies.



*Altogether, Adam lived a total of 930 years, and then **he died.***
Genesis 5:5

2

SPIRITUAL

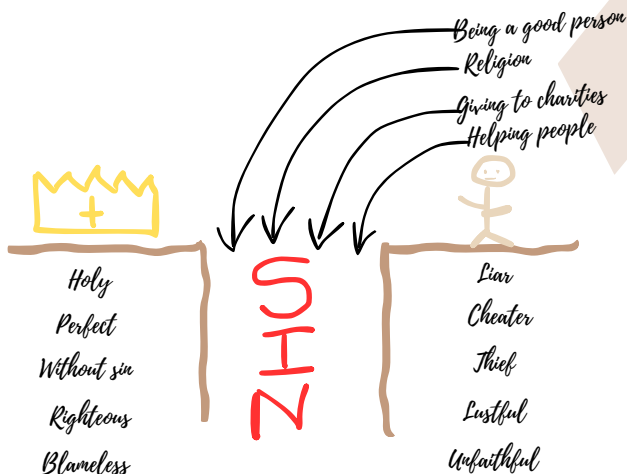
Spiritual death is permanent separation from God. This is often referred to as "hell."



*So the Lord **God banished him** from the Garden of Eden to work the ground from which he had been taken. After **he drove the man out.....**"* Genesis 3:23-24 NIV

IT'S NOT ENOUGH

Your best efforts can NEVER be enough to reconnect you to God.



For all have sinned and fall short of the glory of God.

Romans 3:23 (NIV)

Therefore no one will be declared righteous in God's sight by the works of the law, rather, through the law we become conscious of our sin.

Romans 3:20 (NIV)

Your situation looks bleak!

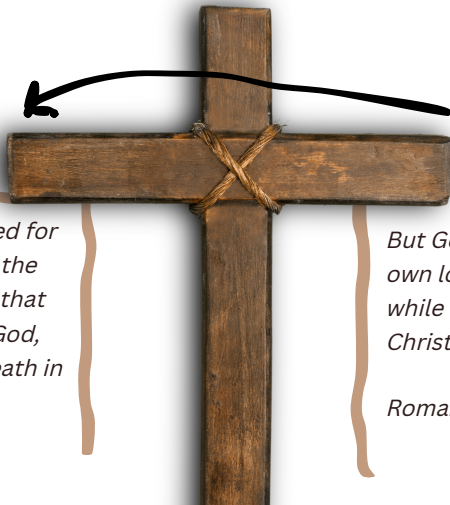




GOD'S SOLUTION

god makes a way

JESUS



For Christ also suffered for sins once for all time, the just for the unjust, so that He might bring us to God, having been put to death in the flesh.....

1 Peter 3:18 (NASB)

But God demonstrates His own love toward us, in that while we were still sinners, Christ died for us.

Romans 5:8 (NASB)

- **YOUR SIN SEPARATES YOU FROM GOD.**
- **GOD DOESN'T WANT YOU TO BE SEPARATED FROM HIM.**
- **GOD SENDS HIS SON, JESUS, TO THE WORLD TO MAKE A WAY FOR YOU TO RECEIVE FORGIVENESS OF SIN AND BE RECONNECTED TO GOD.**
- **JESUS' DEATH ON THE CROSS PAYS THE COST OF YOUR SIN.**
- **JESUS RESURRECTED FROM DEATH (EASTER), AND DEFEATED SIN AND DEATH. THIS PROVES THAT HE IS GOD'S SON AND MAKES A WAY FOR YOU TO BE FORGIVEN.**

Q: How will your respond?

YOUR RESPONSE

ALTHOUGH JESUS DIED FOR EVERYONE'S SIN (JOHN 3:16), NOT EVERYONE WILL BELIEVE, ACCEPT OR RECEIVE THIS SACRIFICE. EACH OF US NEEDS TO INDIVIDUALLY AND PERSONALLY RESPOND TO WHAT JESUS DID FOR US.

If we confess our sins, He is faithful and just and will forgive us our sins and purify us from all unrighteousness.

1 John 1:9 (NIV)

Believe
&
Confess



If you confess with your mouth Jesus as Lord, and believe in your heart that God raised Him from the dead, you will be saved; for with the heart a person believes, resulting in righteousness, and with the mouth he confesses, resulting in salvation.

Romans 10:9-10 (NASB)



GOD SPEAKS TO YOU

For God so loved the world that He gave His only Son, that whoever believes in Him shall not perish but have eternal life.

John 3:16 (NIV)

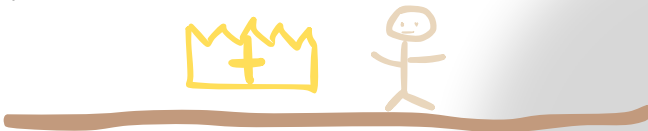
Q: WHAT DOES GOD DESIRE YOU TO KNOW ABOUT HIM IN THE FIRST FEW WORDS OF THIS VERSE?

Q: WHO IS THIS VERSE DIRECTED TO?

Q: WHAT DOES GOD PROMISE WILL NOT HAPPEN TO YOU THOUGH THIS VERSE?

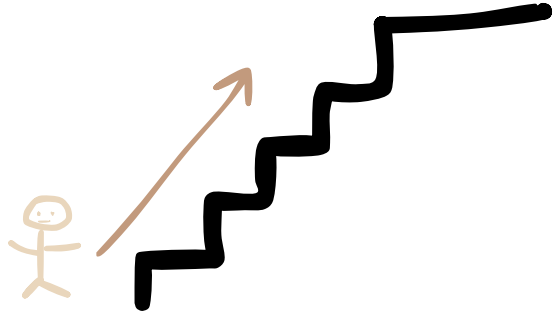
Q: WHAT DOES GOD PROMISE WILL HAPPEN TO YOU THROUGH THIS VERSE?

RESTORED
RELATIONSHIP





YOUR NEXT STEPS



A

Admit that you are a sinner, separated from God and are in need of a Savior.

B

Believe that Jesus died for you and rose again to remove your sin that separates you from God.

C

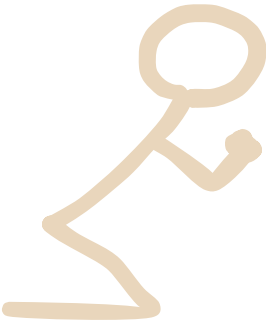
Commit your life to following God, and put your full trust in Him.



A SIMPLE PRAYER

Jesus, I know that I am a sinner, and that my sins separate me from God. Please forgive my sins. I repent, and turn from them. I ask that you would come into my life and make me new and put me in a right relationship with God.

Thank you for dying on the cross for me. I commit my life to you, and I ask that you would give me a fresh start, living only for you, and not for myself. In Jesus' name I pray, amen!



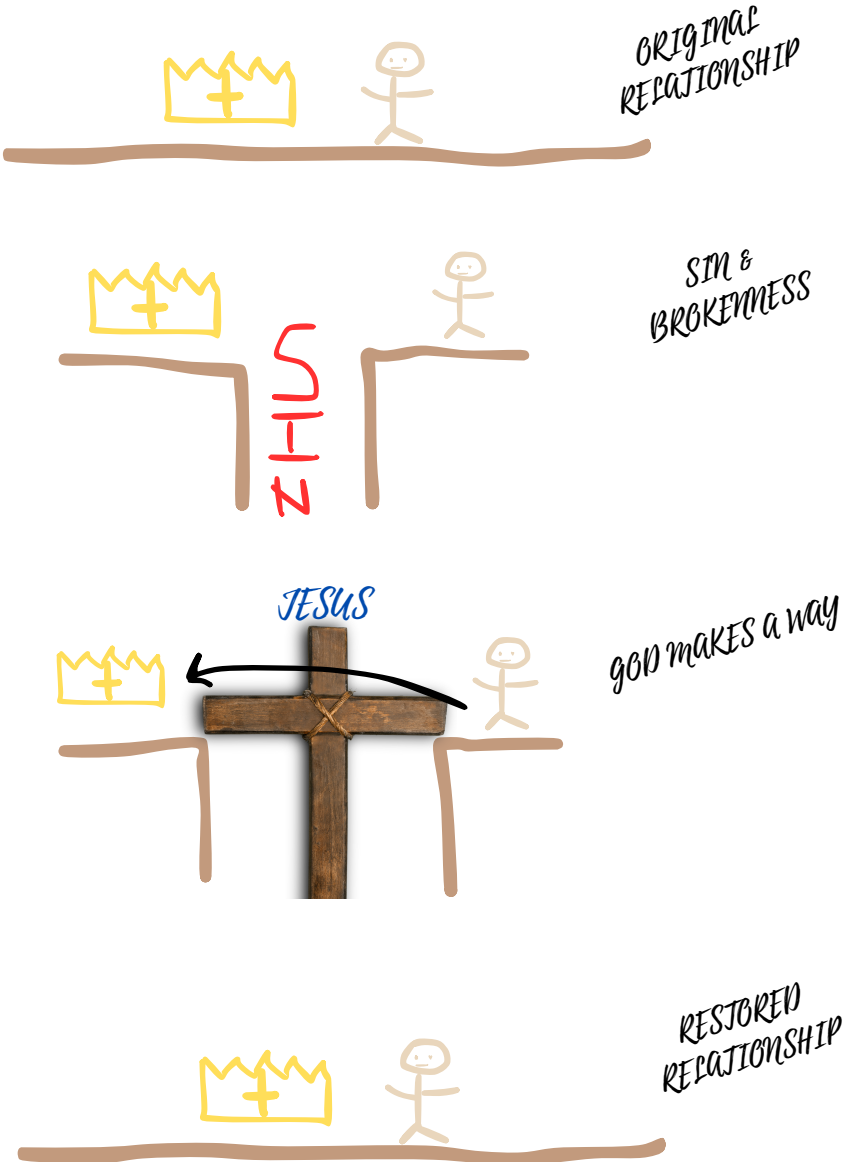
Therefore, if anyone is in Christ, the new creation has come: the old has gone, the new is here!

2 Corinthians 5:17 (NIV)

WHAT?

-

RECAP



NOTES

RADIUS STUDENTS

**This booklet is written and produced by
RADIUS Students, a ministry of RADIUS Church.**

Copyright 2023

Follow us on Instagram:

@radiusstudents

RADIUS CHURCH

300 West Main Street
Lexington, SC 29072
www.radiuschurch.org